



incredible

Innovation Networks for Cork, Resins & Edibles

“Resin resource monitoring & modelling in a context of climate change”

Madrid, January 21/22, 2019



Organized by:

INIA, Madrid (Spain)

iNet

Interregional Workshop

Coordinator



Partners



Forestas

Agencia forestal regional para a Galicia de az
territorio e de l'ambiente de sa Sardegna
Agencia forestal regional per la sviluppo del
territorio e dell'ambiente della Sardegna



This project has received funding from the European Union's Horizon 2020 research and innovation programme under grant agreement No 774632

www.incredibleforest.net

“Resin resource monitoring & modelling in a context of climate change”

Introduction: This two-day event combines a seminar about the state of art and the sector’s requests. Multi-actor sessions will be animated by innovation facilitators, to cover the first of the identified **iNet Priorities** related to sustainable production of natural resin from Mediterranean forests, **Resource modelling in a context of climate change**. It has been retitled **Long term resource availability in a context of global change**, switching focus from science tools to more practical issues. The quality and relevance of delivered knowledge will be collectively assessed, priorities and future activities will be identified.

Addressed to: Forestry modelers, Resin sector enterprises and stakeholders, Decision makers

Venue: INIA, National Institute for Agricultural and Food Research and Technology
Crta. La Coruña km 7,5, 28040 Madrid (Spain)

Language: English

Objectives to be reached:

A. Participants:

- 1- are familiar with INCREdible network and objectives;
- 2- have a grip on resin resource availability and potential in the different countries;
- 3- are aware of the main threats & challenges for resin tapping in pine forests;
- 4- know about the state of art, potential and requirements of forest modelling for resin production;
- 5- agree on the needs and challenges of the resin sector that forest inventories models can respond.

B. Resin iNet questions directly targeted:

- 10 - What is the potential for resin production in each region?
- 12 - In a context of global change, will the geographical area and productivity of the maritime pine change?

PROGRAMME

Monday, January 21, 2019	
11:00	Register of participants
12:00	Opening session <i>Welcome by the Director of INIA</i> Esther Esteban Rodrigo INCREdible, the thematic network on Mediterranean NWFP Sven Mutke, INIA-iuFOR Objectives and structure of the workshop Javier Calvo, CESEFOR / Ricardo Alía, INIA-iuFOR

Session 1. Resin production from pine forests: resources, inventory and monitoring – where are we?	
12:30	Portuguese resin traceability & statistics (SiResin) Paula Soares, ISA-U.Lisboa
12:45	Resin in Spanish National Forest Inventory & statistics Elena Robla / Iciar Alberdi, MAPAMA/INIA
13:00	Potential of French maritime pine forests for resin production Christophe Orazio, EFI
13:30	Lunch
14:30	Resin tapping in Castilla y León –keys of a success story Javier Ezquerra / Álvaro Picardo, Junta de Castilla y León
14:45	Development of a web/Android app for resin traceability Javier Calvo, CESEFOR/SustForest Plus
15:00	Pine forests in Tunisia – an opportunity for local employment in resin production? Ibtissem Taghouti / Mokhtar Baraket, INRGREF
15:15	<i>Panel Discussion</i>
16:00	Coffee break
16:30-18:00	<i>Group work</i>
Tuesday, January 22, 2019	
Session 2. Threats & challenges for resin tapping in pine forests – what are we facing?	
09:00	Climate change and forest resilience – maritime pine decline at southern Guadarrama Guillermo Gea / Dario Martín Benito, INIA
09:15	Maritime pine decline in Northern Castile, droughts and implied pathogens Julio Diez Casero, iuFOR-U. Valladolid
09:30	Rural abandonment and evolution towards megafires – a rural renaissance needed? Conceição Colaço, ISA-ULisboa
09:45	<i>Panel Discussion</i>
Session 3. Resin yield data & models, a support for resource mobilisation – what can science tell us?	
10:00	Which resin yield data and models do the resin sector need? Mariana Ferreira, LURESA Resinas
10:15	What information is needed for market and profitability analysis of resin tapping systems? Christophe Orazio / Armand Clopeau, EFI / SustForest Plus project
10:30	SustForest Lab & sampling protocols for Maritime pine resin as forest resource Ricardo Alía, INIA-iuFOR
10:45	Growth and yield models for Maritime pine and its resin yield Felipe Bravo, UVa-iuFOR

11:00	Coffee break
Tuesday, 22	
11:30	<i>Climate and soil factors influencing individual tree resin yield</i> Aida Rodriguez, UPM
11:45	<i>Process based models for resource monitoring in Pinus pinaster</i> Marta Gonzalez García, CETEMAS
12:00	<i>Remote sensing approaches to forest resource inventories for resin yield modelling</i> Rafael Alonso, föra
12:15	Panel Discussion
12:30	Group work
13:30	Lunch
Final Session. Needs and challenges for the sector that forest models can respond.	
14:30	Group work
16:00	Plenary Session
16:30	Closure
17:00-18:30	[SustForestPlus – internal project coordination meeting]

Practical information

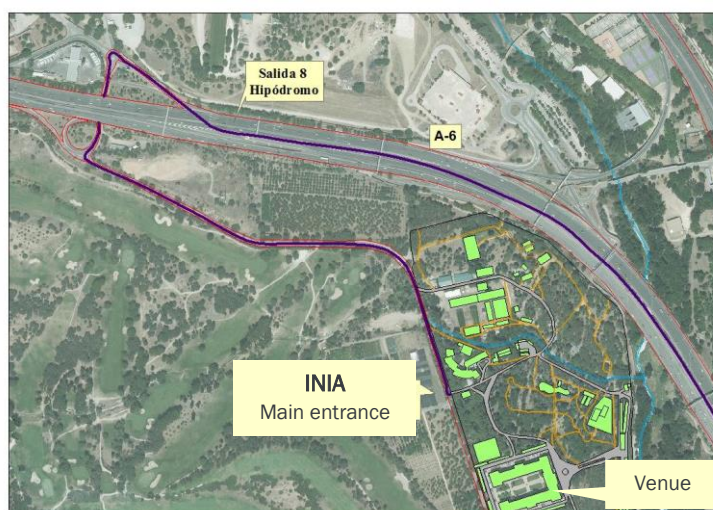
Travel information

Madrid as capital is located in the centre of Spain and can be reached easily by train, bus or plane ([Airport Madrid-Barajas Adolfo Suárez, MAD](#)).

The workshop venue is the National Institute for Agricultural and Food Research and Technology (www.inia.es)

INIA, Instituto Nacional de Investigación y Tecnología Agraria y Alimentaria

Carretera de La Coruña km 7,5, 28040 Madrid ([N 40° 27' 18"; W 03° 44' 55"](#), A6 highway exit **km 8 “Hipódromo”**)



Contact and registration

Please contact INIA-CIFOR secretariat seccifor@inia.es, reference “Resin workshop”