

DESIGN AND IMPLEMENTATION OF A NEW PRODUCTION MODEL FOR THE CHESTNUT MANAGEMENT IN EL BIERZO (CASTILLA Y LEÓN)

Roberto Rubio Gutiérrez
Roberto.Rubio@cesefor.com

MARSELLA, MARCH 7, 2019

Coordinator



Partners

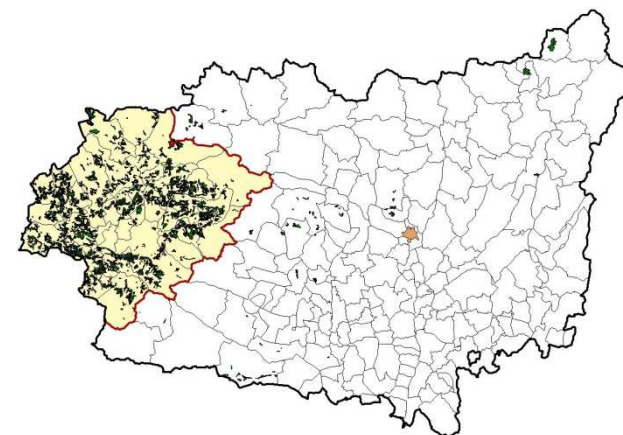
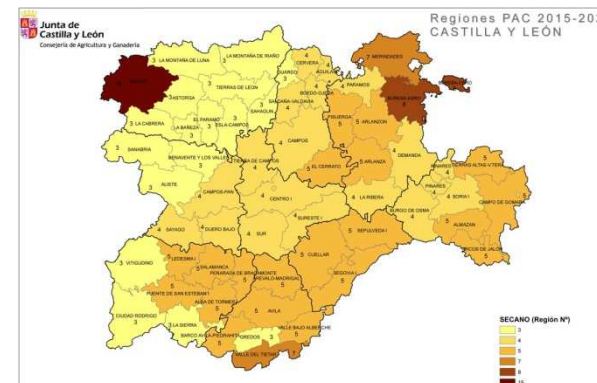


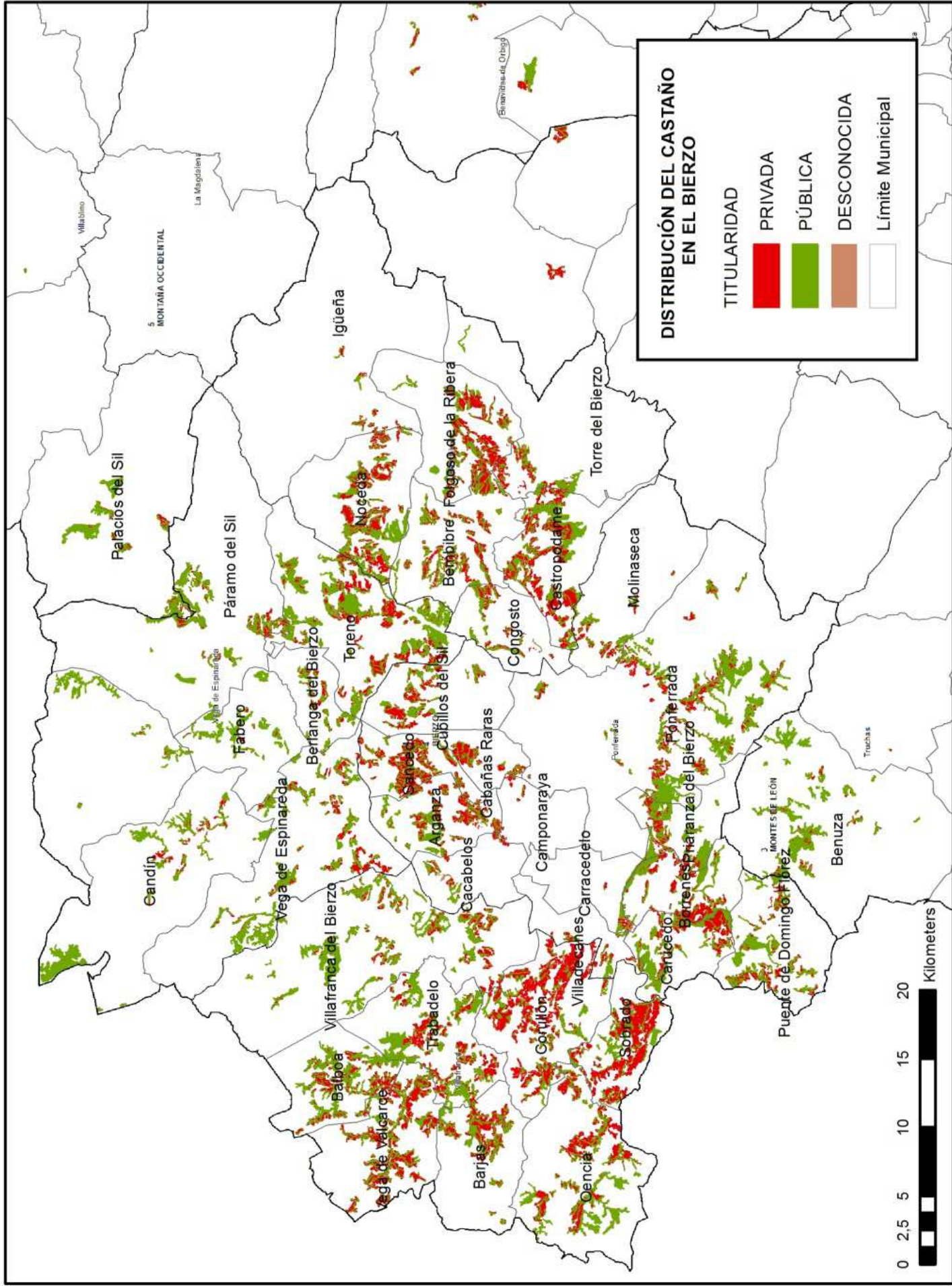
This project has received funding from the European Union's Horizon 2020 research and innovation programme under grant agreement No 774692

www.incredibleforest.net
info@incredibleforest.net

START

- The surface of the chestnut habitat in El Bierzo is about 19,000ha with a main production of chestnut is about 8,000Tn.
- Serious phytosanitary affectation by chestnut blight and others affecctions.
- Low productivity.
- Smallholdings.
- Non-professional management of chestnut orchards.
- Informal sector

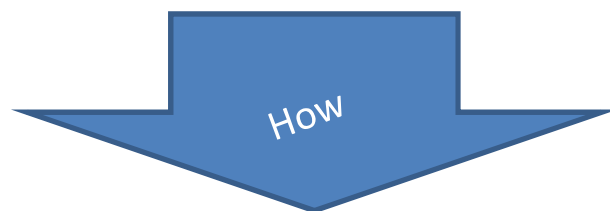






In 2009 the sectorial committee of the chestnut was constituted

Chestnut strategic plan in El Bierzo by JCYL



It's necessary a new productive model that organizes the productive system.

This model should solve the problems

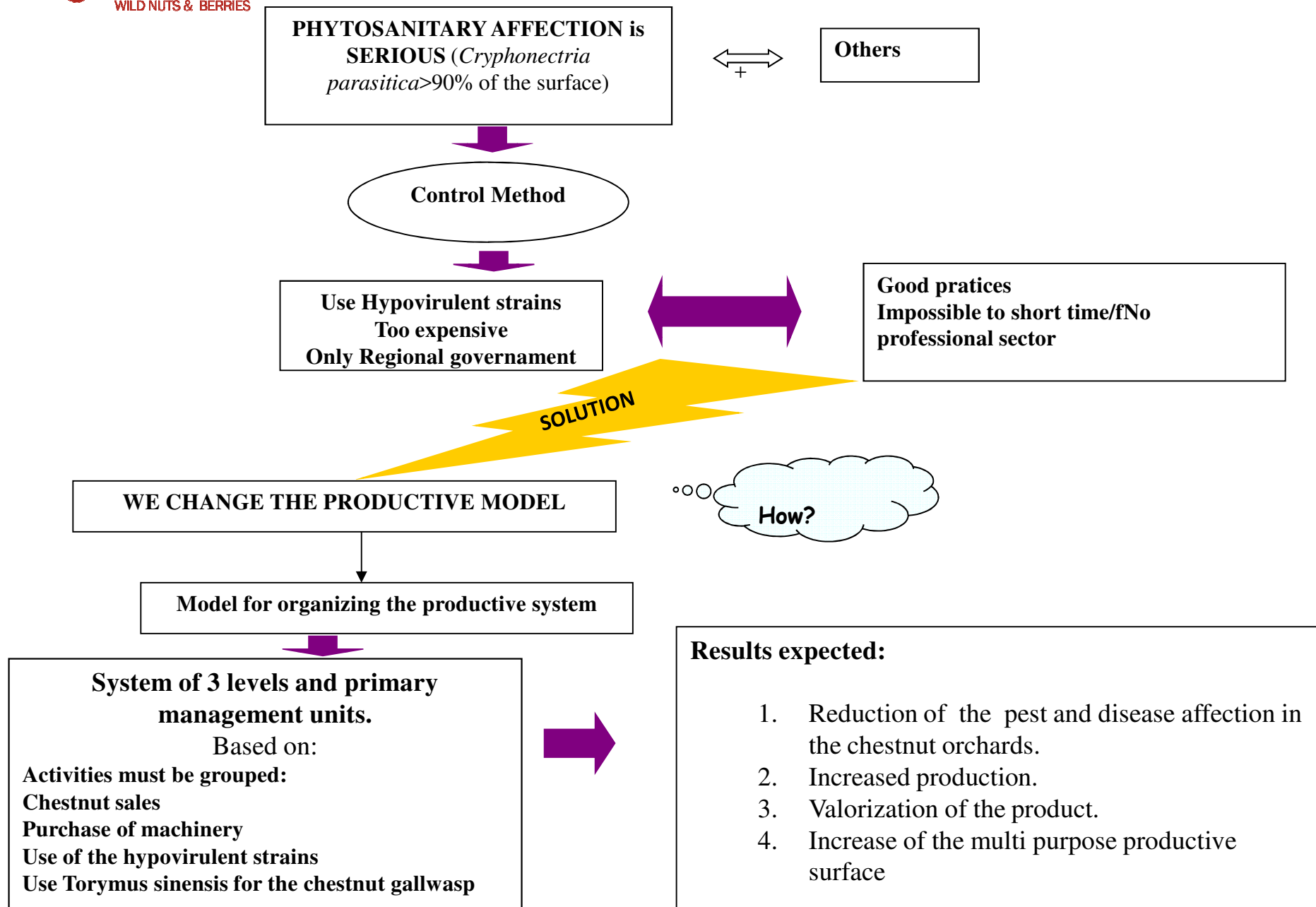


3 strategic lines:

- I. Production**
- II. Recovery**
- III. Participation**



But why change the productive model ??????



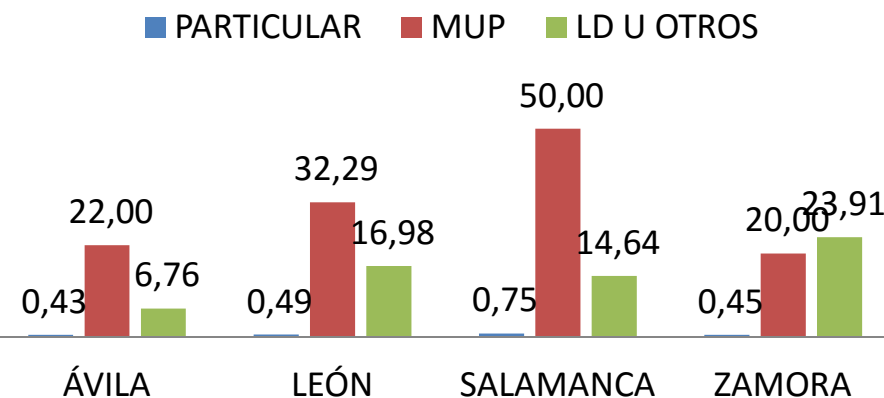
Chestnut small holding

TITULARIDAD	%	TAMAÑO MEDIO PARCELA	TAMAÑO MEDIO TITULAR
ÁVILA: 2.437 Ha			
PRIVADA	68,16	0,2	0,43
PÚBLICA			
MUP	20,93		22
LD U OTROS	9,15		6,76
TOTAL PÚBLICA	30,08		
DESCONOCIDA	1,76		
TOTAL	100		
LEÓN: 31.433 Ha +			
PRIVADA	55,89	0,15	0,49
PÚBLICA			
MUP	21,16		32,29
LD U OTROS	19,28		16,98
TOTAL PÚBLICA	40,44		
DESCONOCIDA	3,67		
TOTAL	100		
SALAMANCA: 12.043 Ha			
PARTICULAR	72,38	0,3	0,75
PÚBLICA			
MUP	15,79		50
LD U OTROS	9,24		14,64
TOTAL PÚBLICA	25,03		
DESCONOCIDA	2,59		
TOTAL	100		
ZAMORA: 11.363 Ha			
PRIVADA	73,07	0,1	0,45
PÚBLICA			
MUP	9,57		20
LD U OTROS	14,31		23,91
TOTAL PÚBLICA	23,88		
DESCONOCIDA	3,05		
TOTAL	100		

CHESTNUT. POTENCIAL AREA

*DATA SURFACE: SPANISH FOREST MAP

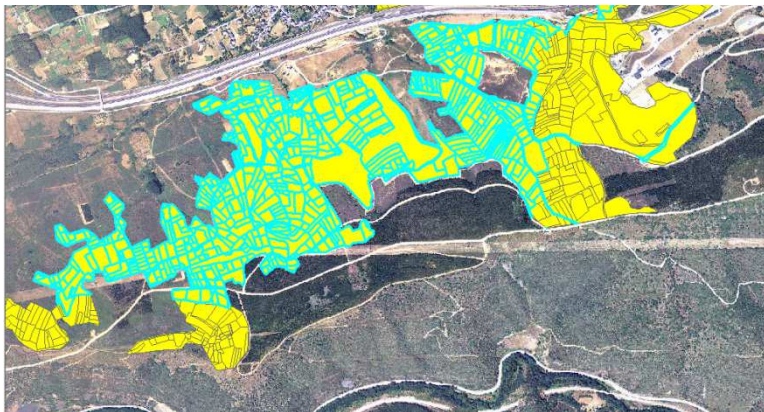
FOREST FARM SIZE OF CHESTNUT ORCHARDS



Chestnut smallholding the case of El Bierzo

Chestnut orchards surface: 19.286.70 ha ,
in 306.569 plots, with an average per plot of 630 m²
22.000 – 29.000 owners
and only production rights???? Possibly
>5.000

Forest Farm size 0.49ha 30-40 chestnut tree



74 ha in 748 plots
of 990 m²

Regression of the land productivity



2010



1956



1945

STRATEGIC organization

- *1st level - Primary production.*

*Cooperative society
Mercantile or agrarian companies
Grower associations*

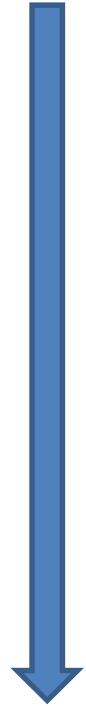
- *2nd level*

Marketing of the product

- *3th level*

- *Services*
- *Tourism*

corporate social
responsibility
framework



Objectives

Main Objective: "The durability of the chestnut tree as a social, economic and landscape element".

Others:

- Commercialize the chestnut together according to the current regulations.
- Keep and preserve the chestnut orchards, to prevent the spread of chestnut blight and others. Impossible without the association of the owners of the crops.
- In the future: Create specialized and professional jobs in the care and realization of jobs with chestnut activity.
- Make the activity without generating any added cost to the owners, except for those agreed between the partners.

MANAGEMENT OF THE ASSOCIATION PROCESS

Previous:

- Local analysis
- Characterisation of the production and grower
Important!!
availability to associate!!!

How is it going to be constituted?

Stages:

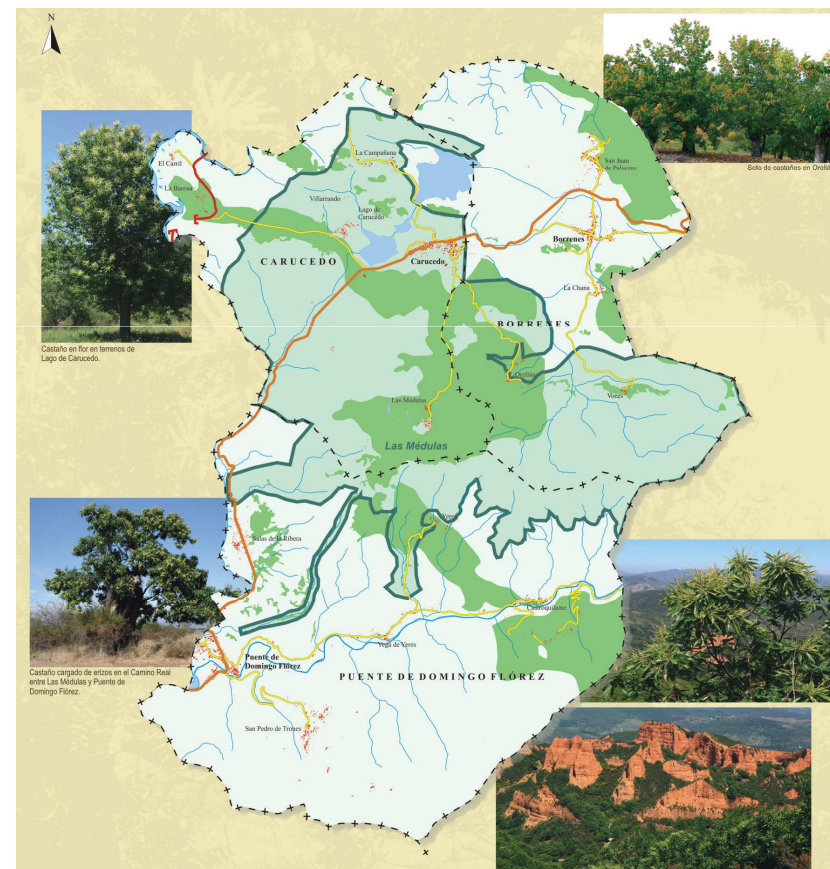
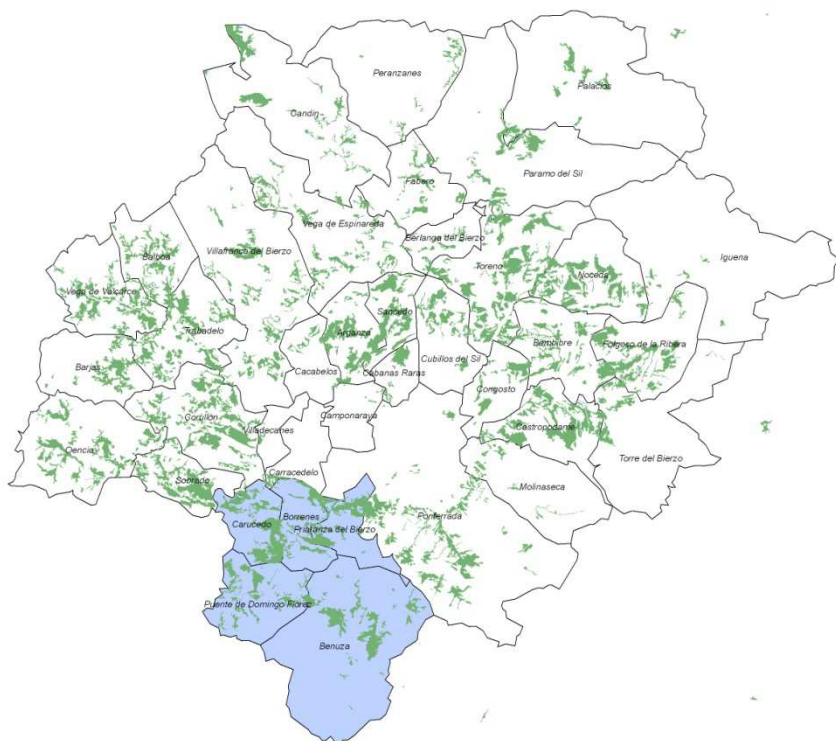
- 1: Period of information.
Information to owners and constitution of the association.
- 2: Association period.
The owners are associated.
- 3: Preparation of a campaign to collect and carry out activities
Start of the organization of the fall collection campaign and establishment of the necessary legal tools for its correct and legal execution.
Preparation of association / grouping actions for treatment of diseases and pests.
- 4: Start of the campaign and jobs.
Hiring of personnel for the campaign and start of work.

Who will manage the association?

- A Board of Directors in which all the owners of each village are represented.
- Entities of the chestnut sectorial committee in El Bierzo: technical advisory.

Where are we going?

MONUMENTO NATURAL DE LAS MEDULAS



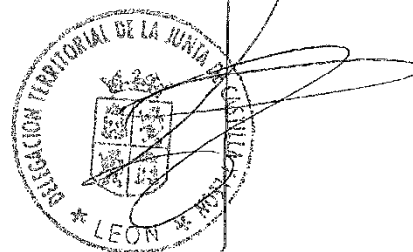
A new production model for the chestnut in El Bierzo



CERTIFICO:

Que en el Registro de Asociaciones de esta Delegación Territorial aparece inscrita con el nº 4413, Sección Primera, la entidad denominada ASOCIACIÓN "CASTAÑOS DE LAS MÉDULAS", con ámbito territorial de actuación provincial.

Y para que conste, a los efectos oportunos, certifico en León a cinco de julio de dos mil once.



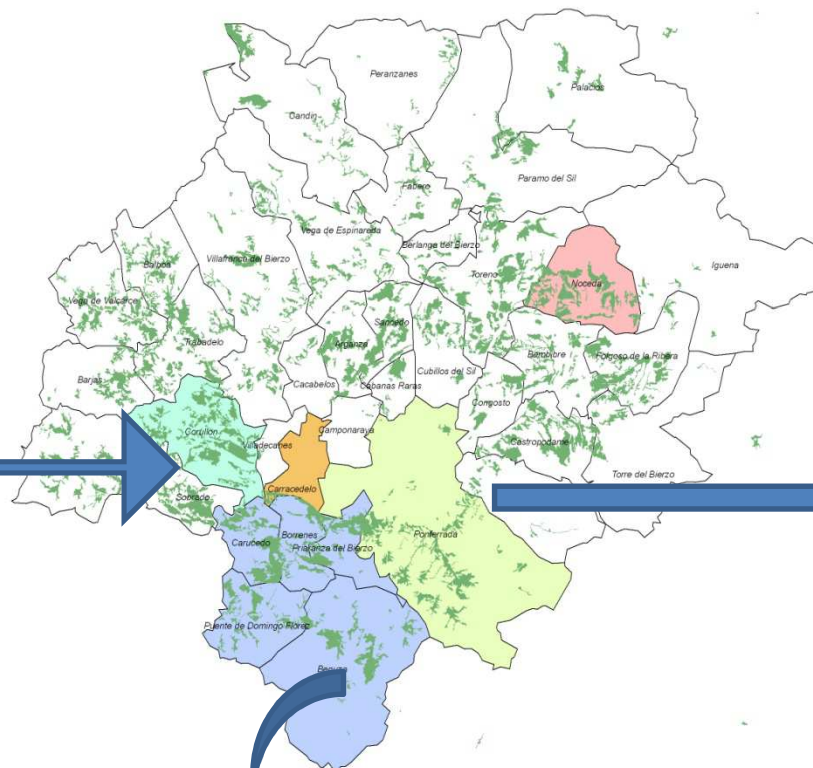
Artículo 2º Fines y actividades.

Esta asociación tiene como objetivo general el aumento del rendimiento económico de la castañicultura, el aprovechamiento integral de los recursos endógenos del medio rural ligados al castaño y la perdurabilidad del castaño como elemento natural, social y paisajístico, en los términos municipales de Benuza, Borrenes, Carucedo, Priaranza del Bierzo y Puente de Domingo Flórez.

A new production model for the chestnut in El Bierzo

We have 3 associations!!

FUTURE +



**Asociación
Castaños del
OZA**





INITIAL RESULTS

3 ASSOCIATIONS



YEAR
2011
2018

Members
12 members
>200 members

Turnover
<20.000,00€
>200.000,00€



**ASOCIACIÓN DE
CASTAÑICULTORES
LOS TRES VALLES**
VALCARCE, BALBOA Y BARIAS



**INVITA A TODOS LOS
INTERESADOS Y SOCIOS A UNA
REUNIÓN EL
SÁBADO 11 FEBRERO a las 18:30
En el Colegio de Vega de Valcarce**

Realizaremos un balance del año 2016 y de las
próximas actuaciones y propuestas para el año
2017 y un coloquio sobre el sector.

castañastresvalles 



UPGRADE





CONCLUSIONS

- ◎ **SECTORIAL STRUCTURING IN THE REGION IS THE ONLY WAY FOR PRESERVING THE CHESTNUT.**
- ◎ **THE IMPLEMENTATION CAN GENERATE EMPLOYMENT**
- ◎ **THE INDUCED VALUE CAN BE CAN BE THREE TIMES THE VALUE OF THE PRIMARY PRODUCTION**



Roberto Rubio
Roberto.Rubio@cesefor.com

Coordinator



Partners



This project has received funding from the European Union's Horizon 2020 research and innovation programme under grant agreement No 774632

www.incredibleforest.net