

Rural abandonment and evolution towards megafires – a rural renaissance needed?

Conceição Colaço, Iryna Skulska - ISA

António Salgueiro - GIFF

Coordinator



Partners



This project has received funding from the European Union's Horizon 2020 research and innovation programme under grant agreement No 774632

www.incredibleforest.net
info@incredibleforest.net

Wildfires have a huge social costs with impacts on the social, economic and environmental dimensions.

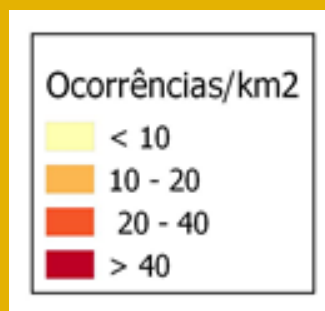
- 4,1 K€/ha (losses)
- 1,0 K€/ha (recovery)

ENF (2015)



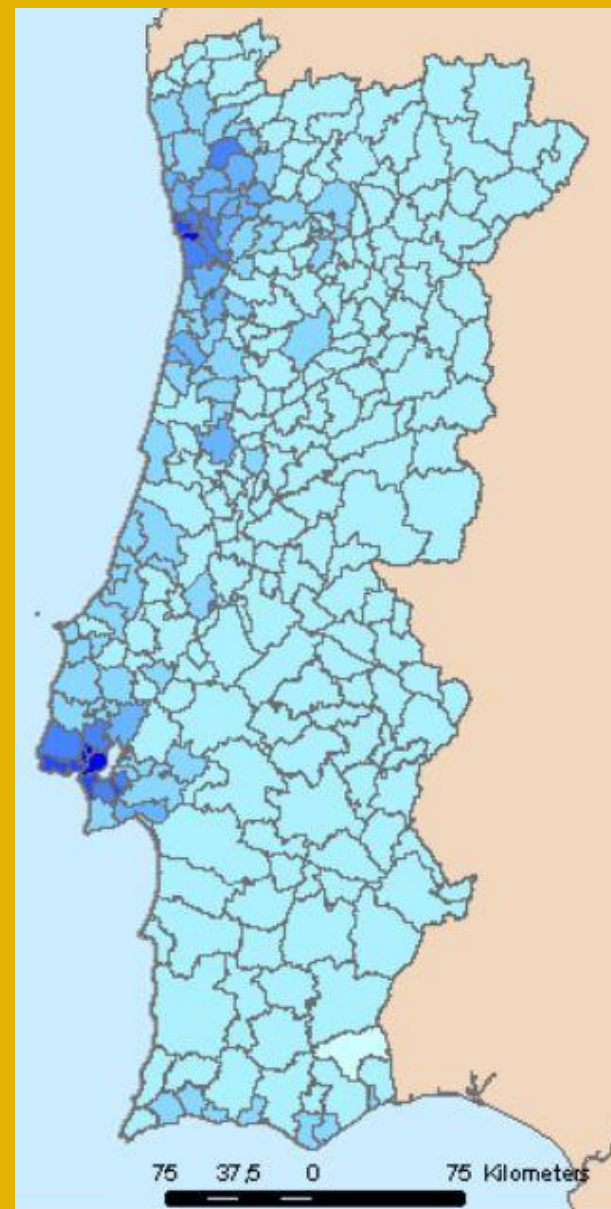
2007-2012
Fire ignitions

Source: ICNF



2011
Inhab/km2

Source: INE



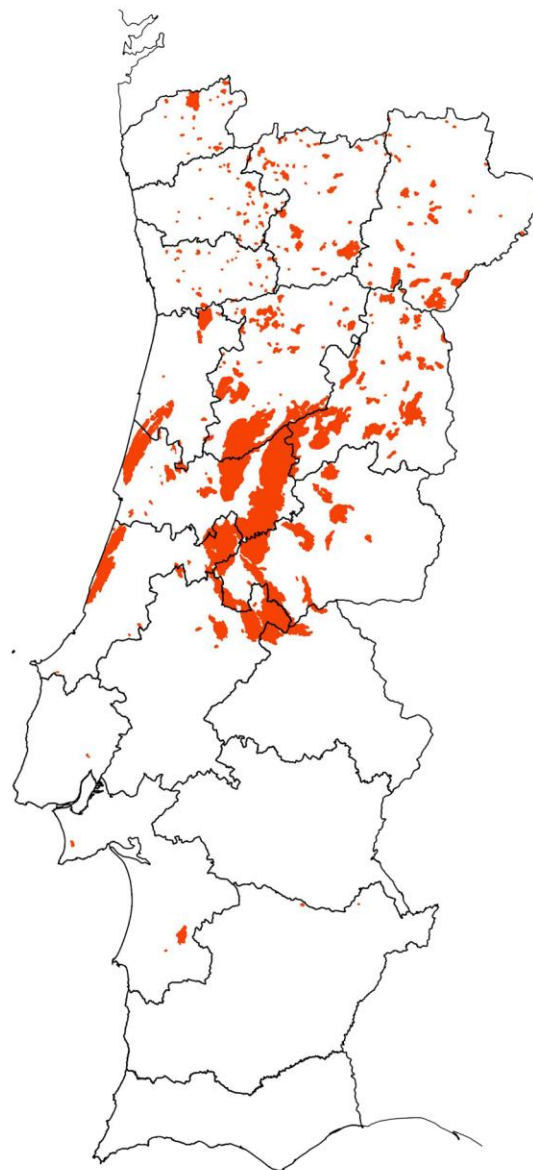
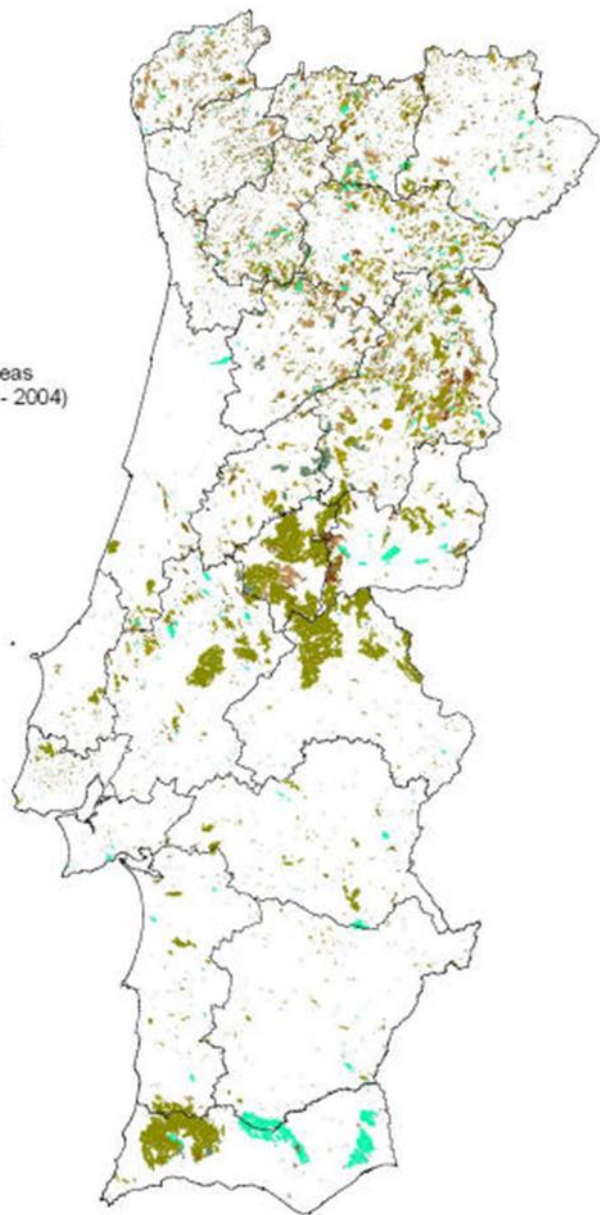
“Resin resource monitoring & modelling in a context of climate change”

Inter-regional workshop, INIA Madrid, January 21/22, 2019



□ Nucleos Florestais
Áreas Ardidas
1997
1998
1999
2000
2001
2002
2003
2004

Cartografia das Áreas
Queimadas (1997 - 2004)



LEGENDA

■ Área Ardida 2017
□ Distrito

ÁREAS ARDIDAS 2017
versão provisória

Fonte: Guarda Nacional Republicana,
Gabinetes Técnicos Florestais e Landsat
e Copernicus

Data: 20 de outubro de 2017

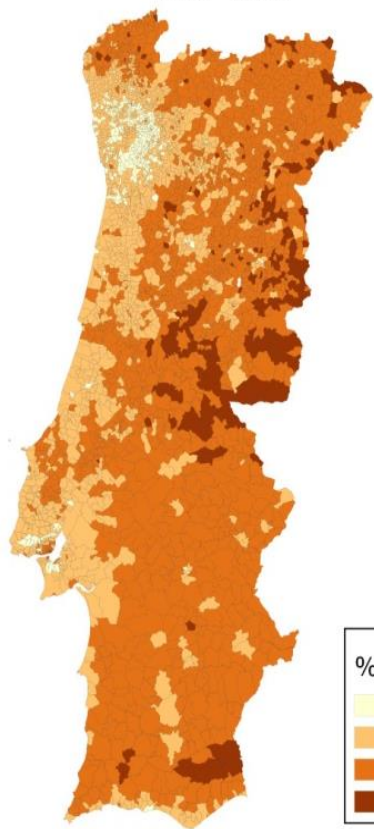
Esc: 1:2.500.000

Mapa **1**

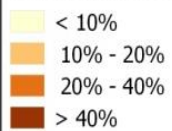
0 25 50
Km

Aging index 2017

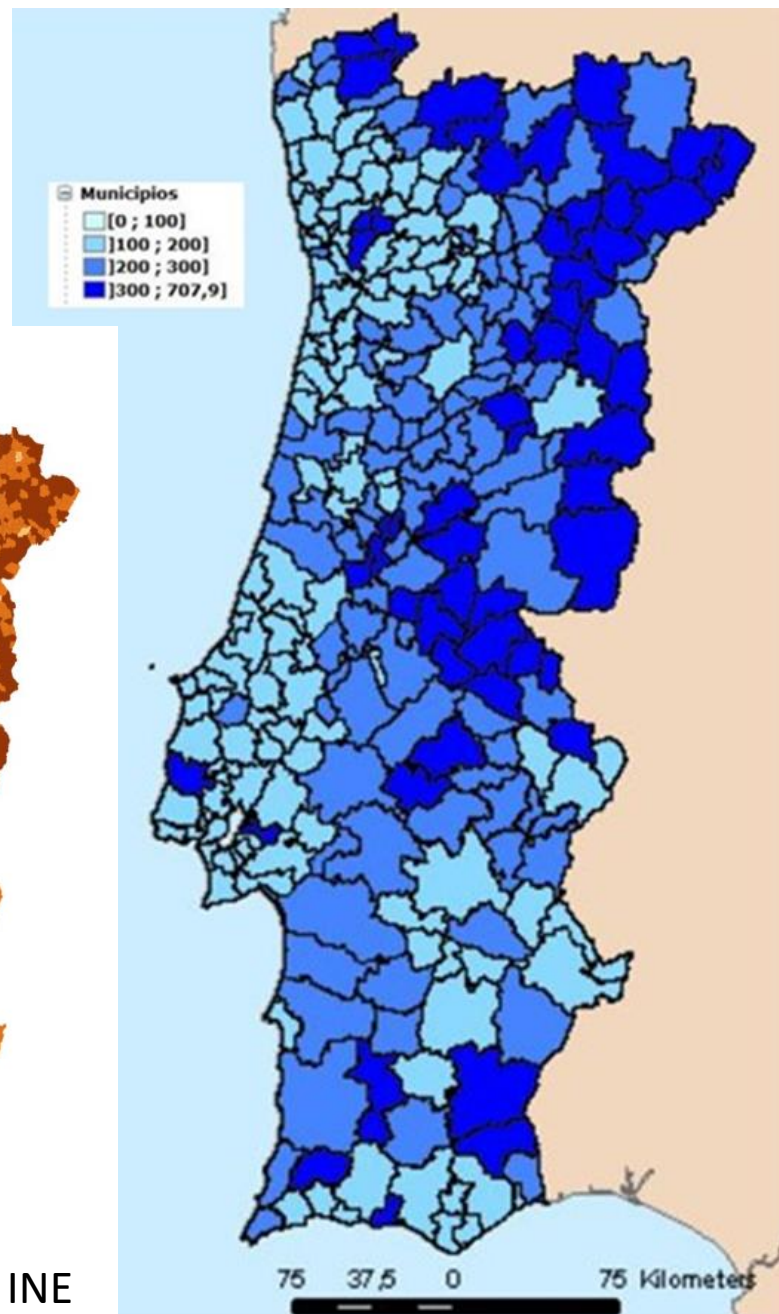
2001 - 2006



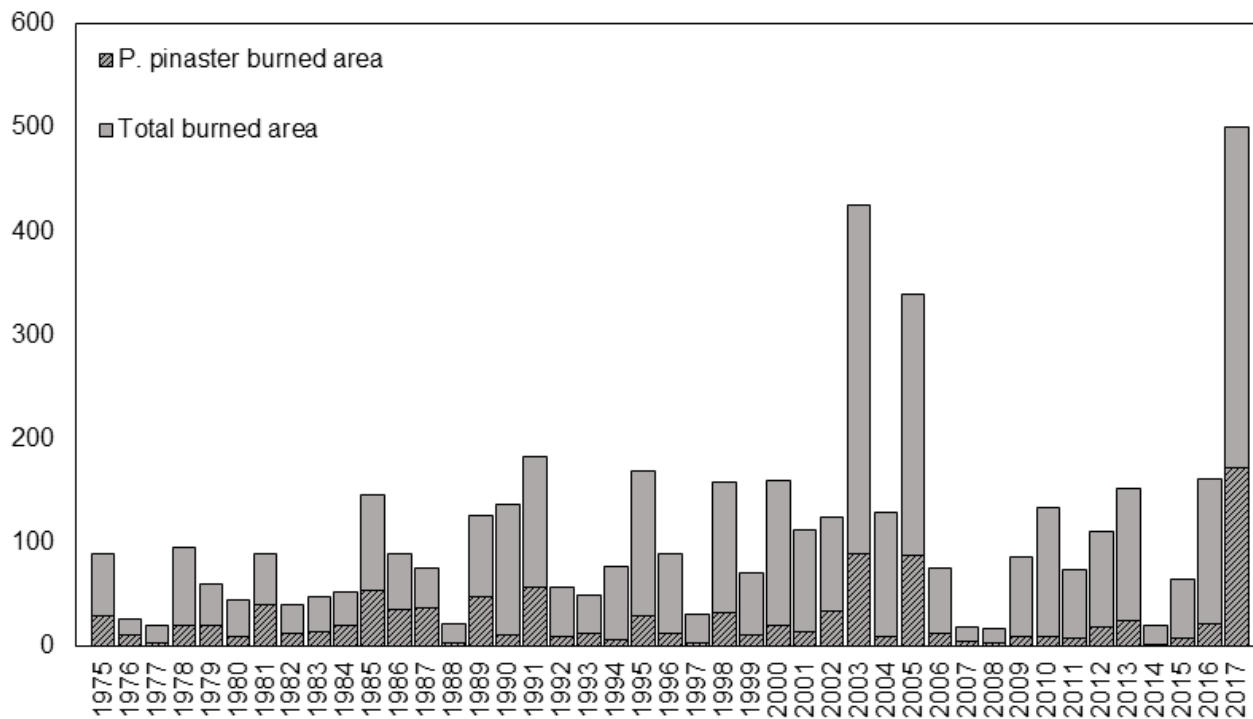
% população com mais de 65 anos



2007 - 2012



Source: INE



Source: Skulska et al. (subm)

Wildfires: main limitation to investment and viability of forest areas in Portugal. Solutions?

- **Source of the problem:**

- natural (climate);
- rural exodus; accumulation and continuity of fuels;
- ineffective justice; lack of knowledge (of reality and specialty forest fire);
- lack of strategies;
- instability and politicization of technical services; corporatism; disappearance of forestry and especially proximity interventions (participatory);
- markets/prices (decrease of wood prices);
- absence of management.

Wildfires: main limitation to investment and viability of forest areas in Portugal. Solutions?

- **Solutions adopted (Portugal ~ ~ Europe: > means and <strategy):**
 1. Deferred and non-productive investments in Prevention (many social and infrastructure protection, poor strategic management, but above any evaluation of effectiveness); Other (awareness, education, training, associations, registration, etc .)
 2. Reactive and non-productive investments in Combat (or funding of media and civil protection structures).

WHY THE PINE RESIN EXTRACTION ACTIVITY ?

ENABLE THE MANAGEMENT OF MARITIME PINE

- ❑ Organizing activities that enable the creation of jobs for local people and continuous production and distribution of income.



- ❑ Creation and maintenance of jobs directly dependents of the existence of forest areas;
- ❑ Recognition of the economic importance of the forest by rural/local populations (salaries, fees);
- ❑ Indirect fuel management;
- ❑ First intervention against forest fires;
- ❑ SUSTAINABLE PRODUCTION OF INTERMEDIATE AND REGULAR INCOMES;
- ❑ PRODUCTIVE SURVEILLANCE AND PROTECTION AGAINST FIRES.



**❑ MANAGEMENT AND PROTECTION OF PINE FORESTS,
PRODUCTIVE AND SUSTAINABLE**

WHY THE PINE RESIN EXTRACTION ACTIVITY ?

ENABLE THE MANAGEMENT OF MARITIME PINE



Grupo de resineiros que também são bombeiros: "Se arde a floresta ficamos sem trabalho"

Uma mão retira a resina, a outra apaga o incêndio

**THANK YOU
GRACIAS
OBRIGADA**

ccolaço@isa.ulisboa.pt



**INSTITUTO
SUPERIOR D
AGRONOMIA**
Universidade de Lisboa



**Centro
Ecologia
Aplicada**
"Prof. Baeta Neves"



Coordinator



Partners



Forestas

Agência florestal regional pro sãilégio de su
território e de s'ambiente de sa Sàrdigna
Agência florestal regional pro lo sviluppo del
território e dell'ambiente della Sàrdigna
SardegnaForeste



This project has received funding from the European
Union's Horizon 2020 research and innovation
programme under grant agreement No 774632

www.incredibleforest.net