



incredible

Innovation Networks for Cork, Resins & Edibles
in the Mediterranean basin

**Policy Forum “Untapping the potential of
non-wood forest products for Europe's
green economy”**

#NWFPpolicy
www.incredibleforest.net

16th - 17th March 2021
Online event

National Programmes for NWFPs in Turkey

SESSION III: Competitive and equitable NWFP value chains.
DAY 2: 17/03/2021 11.00-13.15 CET

Ismail BELEN

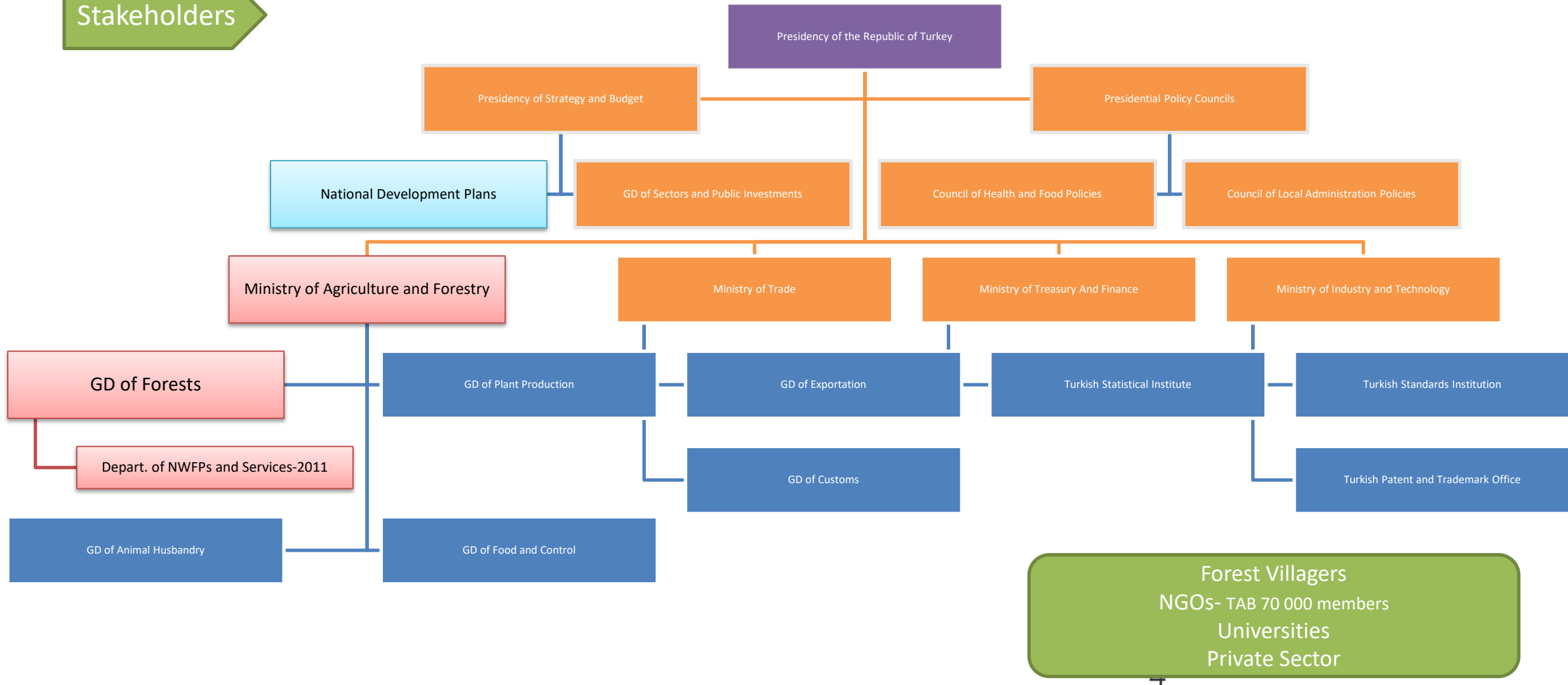
A few numbers about Turkey

Indicator	Unit	Amount
Country area	ha	78 535 000
Forest area by national definitions	ha	22 740 297
Private forest area	ha	18 000
Country population	Person	83 154 997
Forest villagers	Person	7 013 712

Policy Tools

- The Constitution has 177 Articles.
 - Article 45- Protection of **farmers**
 - Article 169- Conservation and improvements of **forests**
 - Article 170- Protection of **forest villagers**
 - Article 171- Promotion of **cooperatives**
- Organic Agriculture Law: (*EU Organic Regulations*)
 - NWFPs fall under the scope of "**harvesting products from natural areas and sources**".
- Veterinary Services, Plant Health, Food and Feed Law
- Forest Law

Stakeholders



Some Regulations and Communiqués

– Forest Management Regulation

– Communiqués

- [Recreational](#) Areas Communiqués-2015
- Communiqué on Inventory, Planning, Production/Harvesting and Sales Principles of [NWFPs](#)-2016
- [Honey Forests](#) Communiqué-2017
- [Ecotourism](#) Areas Communiqué-2017
- [Truffle](#) Communiqué-2020

At the field/implementation

- Action Plans- National Scale
 - Resine, bay leaf, blueberry, truffle, pine honey etc.
- Utilization Plans- For the specific field and product
 - 1 953 utilization plans
- Investor Guidelines- For Private Sector
 - Truffle Orchard Investor Guidelines-2020

Deliverables and Main Findings of the Letter of Agreement signed FAO and the Chamber of Forest Engineers of Turkey (OMO)-2020

- Name: "Provision of Technical Guidelines on Sustainable Management of NWFPs and the Status Reports on Specific Selected Products”
- Started: on 20 December 2019
- Deliverables:
 - NWFPs Assessment Report of Turkey
 - NWFPs Policy Report of Turkey,
 - Detailed reports for pine honey, bay leaf, chestnut, resin and truffle mushroom.
 - Technical Guidelines of Selected NWFPs,
 - Status Update Reports Along with Recommendations in the Value Chain

- In 2019, the contribution of NWFPs to economy **880 million USD**,
- Appr. **200 million USD export**,
- Contribution to forest villagers **123 million USD**.
- Number of forest villagers working is around **25 000 people**.
 - *(wood production is around 150 000 people.)*
- The NWFPs sector makes an economic contribution to appr. **500 000 people**.
- This number includes the people;
 - working in the field for collection,
 - working in drying processes, working in the process of making the final product or semi-finished products,
 - packer, end seller-retailer, exporter etc., family members

NWFP	Export - million USD
Origanum onites	57
Laurus nobilis	38
Castanea sativa	35
Pinus pinea	26
Mushrooms	12

Chestnut

- Around 70 thousand tons harvested in 2019,
- Around 120 million USD national contribution,
- Exported mainly to Italy, France and Spain

Prices of chestnut-based products (1 kg/USD.)

Harvesting site	2	
Markets		5
Candied Chestnut		15
Chestnut honey	40	



For more information: Ismail Belen, 2001, Utilization from chestnut as non wood forest product in the World and Turkey.

http://www.fao.org/3/y3660e/y3660e05.htm#P1398_260616

İsmail BELEN

ismailbelen52@gmail.com

<https://www.linkedin.com/in/ismailbelen/>

+90 506 222 48 19



Thank you!



incredibleforest.net



[@Incredibforest](https://twitter.com/Incredibforest)



[@incredible-project](https://www.linkedin.com/company/incredible-project)